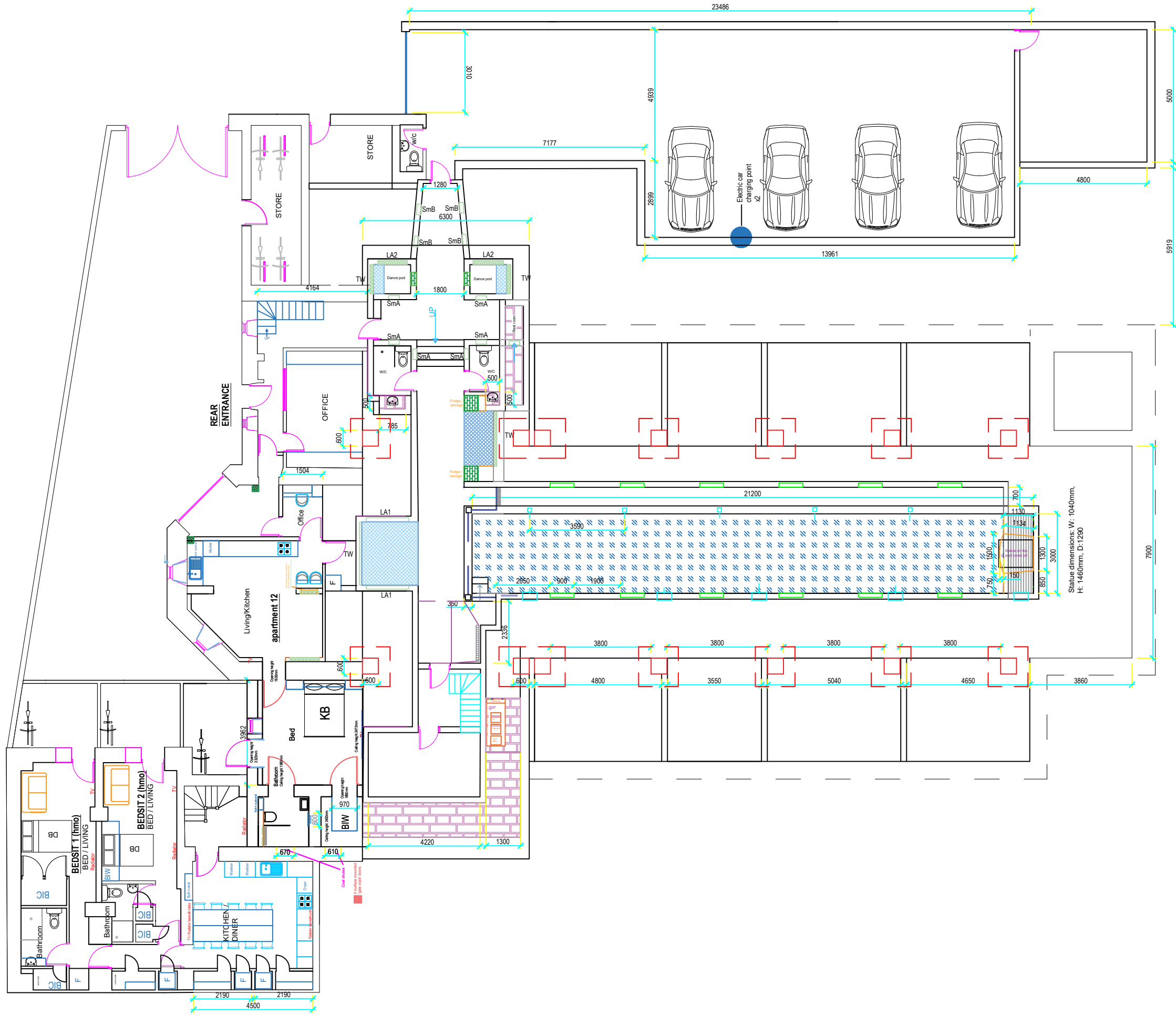




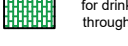


CSC-Proposed-Basement-Plan



Cannon Street Church
Scale 1:150
Basement floor plan
Version 25
Drawn by: N.D.

-  Pool water
-  Seating
-  Usable Void
-  Alcove - See alcove key for dimensions
-  Purpose made shelf - for drinks / to climb through into dance pods

SmA: Alcoves to start at 1m above floor level and be 400mm (L) x 600mm (H).

SmB and 2 x shelves into Dance pods: To start at 1m above floor level and be 500mm (L) x 750mm (H).

PsA: All poolside alcoves (either side of the pool) to be 900mm (L) x 1350mm (H), starting 300mm above water level.

TW: Tiled wall - completely tiled in the B&W mosaic tiles.

LA1: Long alcove, starting 1m above floor level, to be 1600mm (L) x 300mm (H).

LA2: Dance pod long alcoves, starting 1m above floor level, to be 1200mm (L) x 300mm (H).

Statue dimensions: W: 1040mm, H: 1460mm, D: 1290